

*Do You Want to Manage your Broad Band/Bphone
Business efficiently?*

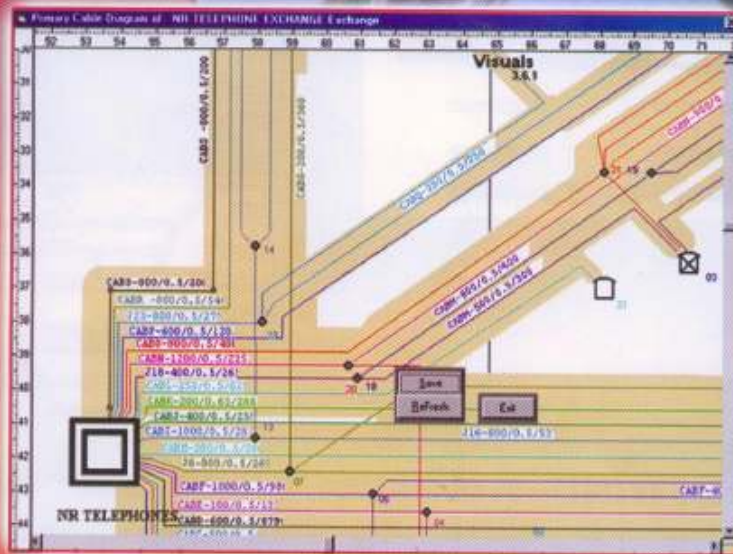
Do You Want to improve the Customer Care System?

Do You Want to know the stock of your huge Assets?

Do You Want to Manage your Business Professionally?

Here is a Cost Effective Solution ...

CELLSWIND
CRMS



A Proven System to Manage Telecom Business!

www.pslindia.com

CELLSWIND CRMS

PSL's CELLSWIND CRMS is a cost effective Cable Records Management System for the easy administration of Cable Records of any Telecom Network. CELLSWIND CRMS provides an extremely user friendly cable diagram management module.

Built on the GIS Technology,CELLSWIND CRMS effortlessly maintains intelligent Cable Diagrams. CELLSWIND CRMS has a Management Information Query system (MIQs) which generates powerful reports for the management. An optional Map Loader module is attached for importing MAPS to the CRMS.

Highlights

- Intelligent Cable Diagrams linked with Local Loop Details
- Comprehensive Local Loops System (Record of Terminals and Cables)
- Quality diagrams just like designed in CAD Software tools.
- Easy to draw and manage
- Easy printing on any Windows compatible printer / plotter
- Easy porting of data from COMMANDIR to start Interface to Commercial Software (Optional)

Record of Terminals

- Facility to indicate faulty cable sections by analyzing pending faults.
- Facility to analyze the cable utilization with respect to Exchange Capacity or cable capacity.
- Facility to Trace the particulars of any object like cables, Pillars, DPs etc with all details.
- Stamped information of cables.

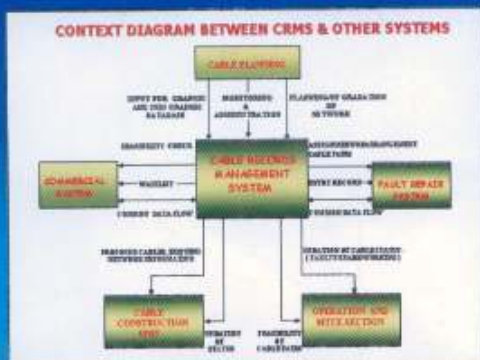
Visuals - Diagrams

Simple yet powerful user interface enables users to create information packed cablediagrams in minutes with very little training.

- Diagrams are linked with Local Loops Database, hence information related to Exchange, Pillar, DP, Cables etc, are automatically placed on the diagram while drawing.

Facility to draw/ View/ alter/ print primary/ inner zone/ distribution / junction cable diagrams.

Click on the objects (Pillar, DP, etc.) on the diagram and see the most recent details of the Telecom Network.



Record of Cables

View / Print DP cards, Pillar Cards and Vertical (MDF) Cards with updated spare details.

- Facility to query spare / working / faulty pairs.
- Very useful to find out the nearest DP, which has spare pair, while allotting new telephone connection / shifting.



CELLSWIND - an e-Governance for Telecom Customer Services

PSL MANAGEMENT AND SOFTWARE TECHNOLOGY LIMITED

Corporate Office: No.2,2nd Cross, Flango Nagar,1st Main Road,
PONDICHERRY 605 010, INDIA.

Phone : 91-413-2243287 Fax: 91-413-2243293

Works: DOMAINE PSL, Gundu Salai,

Oulgaret, PONDICHERRY 605 010, INDIA,
Phone : 91-413-2293291/2/3

Email: cellswind@pslindia.com Web: www.cellswind.com

